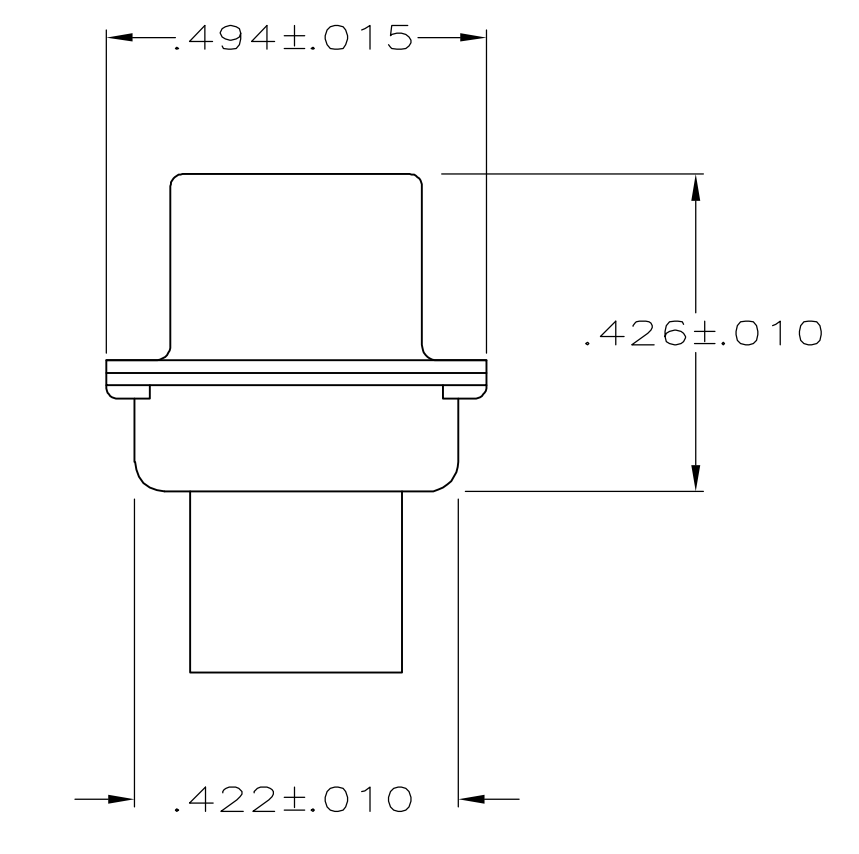
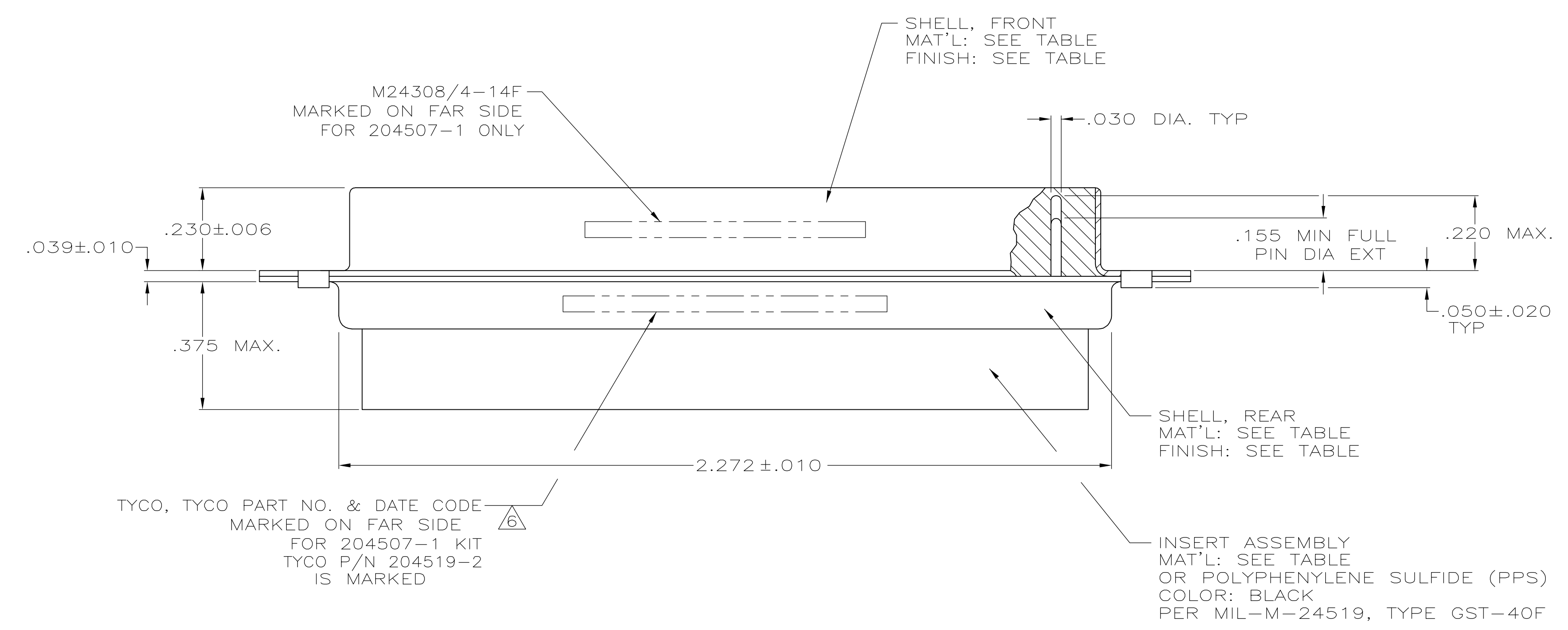
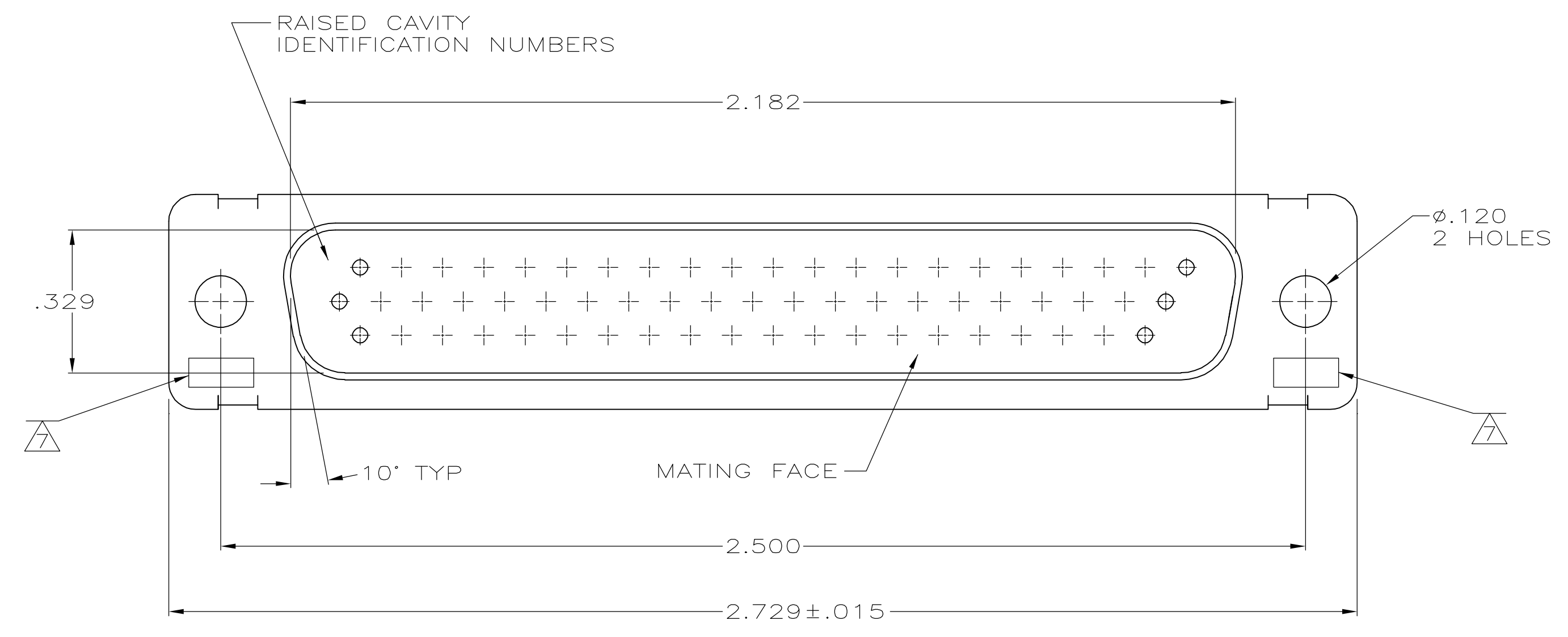


LOC		DIST		REVISIONS			
P	LTR	REV	PER	DATE	DRN	APVD	
T		REV PER	ECO	05-06315	8-2-05	CT DM	

- THIS PLUG IS DESIGNED TO CONFORM TO THE LATEST ISSUE OF MIL-C-24308.
 - MAX WIRE INSUL. TO BE USED WITH THIS PLUG IS .054 DIA.
 - METAL RETENTION CLIPS ARE INCLUDED IN INSERTS.
 - PACKAGE STAMPED M 24308/4-267F.
 - THIS PLUG WILL ACCEPT SIZE 22 PIN CONTACT M 39029/58-360 OR ANY AMP HDD-22 PIN CONTACT
- 6 TYCO PART NO. STAMPED ON CONNECTOR REPRESENTS KIT NUMBER WITH CONTACTS FOR 204507-1 ONLY.
7 UL/CSA DESIGNATION STAMPED IN THIS AREA, OPTIONAL.
8 P/N'S 204507-4, -5, & 5--4 HAVE GROUNDING INDENTS ON FRONT SHELL, NOT SHOWN ON DRAWING.
9 FINISH: BRIGHT TIN PER ASTM-B-545 .000400-.000550 THK OVER COPPER PER AMS2418, .000050 MIN THK.



FINISH	SHELL MAT'L	INSERT MAT'L	PART NO.
8 BRIGHT TIN PER ASTM-B-545	STEEL, CLASS G	GST-40F PER MIL-M-24519	5-204507-4
9	STEEL, CLASS G	GST-40F PER MIL-M-24519	204507-6
8	STEEL, CLASS G	GST-40F PER MIL-M-24519	204507-5
8 BRIGHT TIN-LEAD 93/7	STEEL, CLASS G	GST-40F PER MIL-M-24519	204507-4
SUPSD BY 204507-1	CADMIUM PER QQ-P-416	STEEL, CLASS G	GST-40F PER MIL-M-24519
SUPSD BY 206502-4	CADMIUM PER QQ-P-416	BRASS	GST-40F PER MIL-M-24519
	CADMIUM PER QQ-P-416	STEEL, CLASS G	GST-40F PER MIL-M-24519

THIS DRAWING IS A CONTROLLED DOCUMENT.

DWN: C.C.THOMAS 01-DEC-87	AMP Tyco Electronics Corporation Harrisburg, Pa 17105-3608
CHK: F.C.BALLEW 25-JAN-88	
APP'D: F.C.BALLEW 25-JAN-88	

AMP AMPLIMITE PLUG FOR PIN CONTACTS HI-DENSITY D CONNECTOR SIZE 4 (62 POSN) SERIES 90
 DIMENSIONS: INCHES TOLERANCES UNLESS OTHERWISE SPECIFIED:
 0 PLC ± -
 1 PLC ± -
 2 PLC ± -
 3 PLC ± .005
 4 PLC ± -
 ANGLES ± 0°30'
 MATERIAL: SEE TABLE FINISH: SEE CALLOUTS
 WEIGHT: -
 SIZE: A1 CAGE CODE: 00779 DRAWING NO: 204507
 CUSTOMER DRAWING SCALE: 4:1 SHEET: 1 OF 1 REV: T